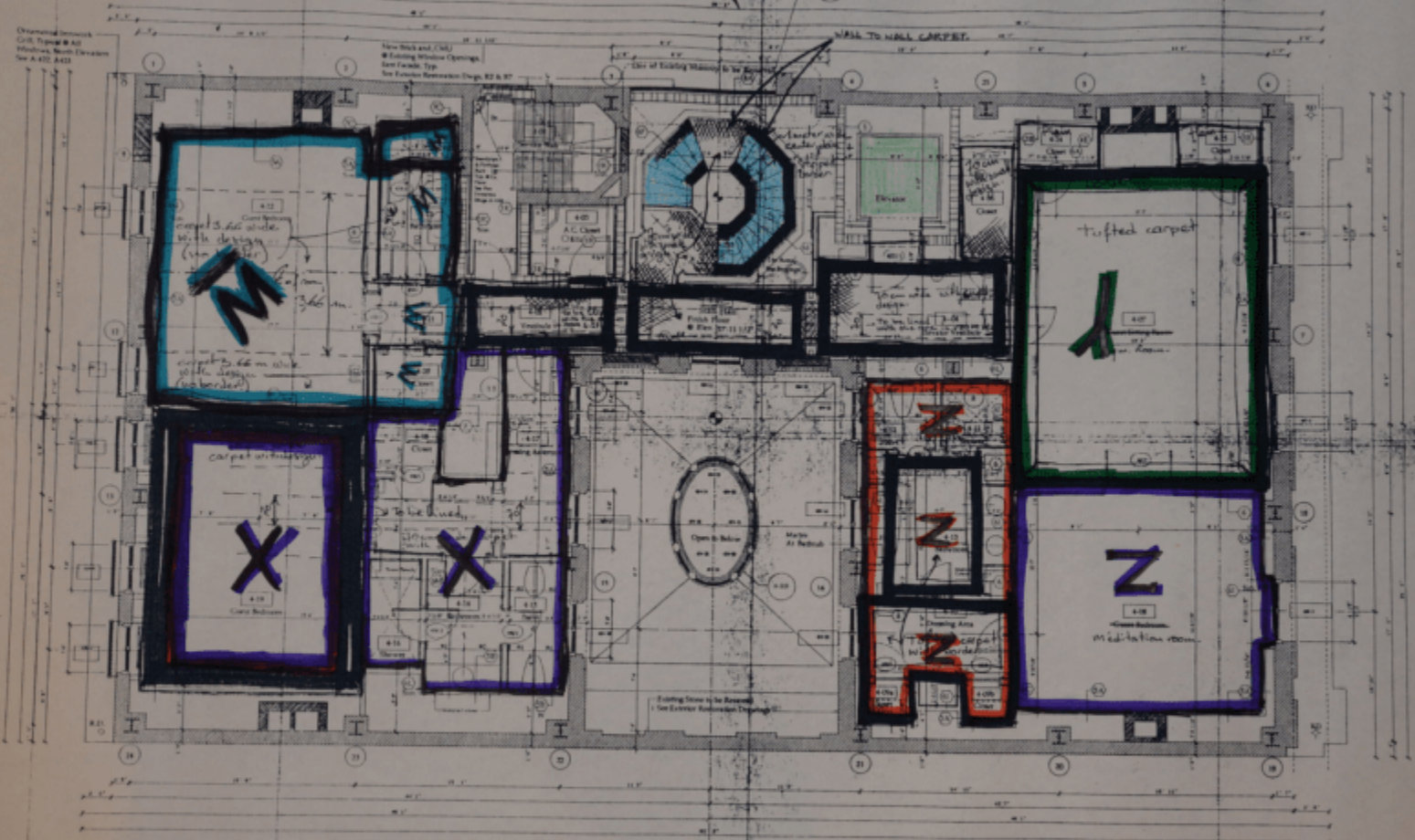


• Date: 7/10/19 • Location: 9 East 11<sup>th</sup> street, New York, NY ~~100~~ Floor  
• Case#: 31E-NY-3027571 • Preparer: SA Margaret Girard 4<sup>th</sup>  
• Date: 7/11/19 • Preparer: SAs Kimberly Medler



ITEM	ROOM NAME	ENLARGED PLAN	5-EXAMPTS
0-01	Architect's		
0-02	Geographic Analysis		A-100
0-03	A.C. Class		
0-04	Graphic, Line Style		A-100
0-05	Reference		A-100, A-217
0-06	Class		
0-07	Class, Living Room		A-100
0-08	Class, Bedroom		A-200
0-09	Class		A-100, A-217
0-10	Class		A-100
0-11	Class, Living Room		A-100, A-217
0-12	Class		A-100
0-13	Class	A-200	A-217
0-14	Class		A-100
0-15	Reference	A-200	A-217
0-16	Reference	A-200	A-217
0-17	Class		A-100

ROOM	ROOM NAME	ENLARGED	ELEVATION
001		PLAN	
010	Storage	A 201	A 201
011	Armory		A 208
012	Closet		7.1.50
013	Restroom		A 201
014	Closet		7.1.50
015	Entrance		A 201
016	Closet		A 201
017	Storage		A 201
018	Storage	A 201	A 201
019	Storage		A 201
020	Storage		A 201
021	Storage		A 201
022	Storage		A 201
023	Storage		A 201
024	Storage		A 201
025	Storage		A 201
026	Storage		A 201
027	Storage		A 201

9 E 71  
NEW YORK

The Office of  
THIERRY W. DESPONT

MECHANICAL ENGINEERS

John L. Albert  
Consulting Engineer  
Norwalk, CT 06854

---

STRUCTURAL ENGINEERS

Give Away & Portraits  
New York, NY 10001  
Favorite

June 22, 1990 Revisions  
 August 31, 1990 Revisions  
 DEC. 31/1990  
 MELIWORK PACKAGE  
 SHEET 5  
 February 26, 1993  
 March 27, 1993  
 April 19, 1993  
 August 26, 1993  
 26 SEPTEMBER 1993

FOURTH FLOOR PLAN  
PLAN LEVEL 37-13-1

DATE: MAY 21, 1964

SCALE *1/2"*

1750  
1750